

The Filson

A publication of the Filson Historical Society, a privately-supported historical society dedicated to preserving the significant history and culture of Kentucky and the Ohio Valley Region.



What's New in
Collections
3

Remembering
Joan Brennan
7

Exhibits
8

New Strategic
Plan
10

History Inspires
Fellows
12

Gertrude Polk Brown
Lecture Series
13

Donor Challenge
Recap
14

The
Filsonians
18

From the President

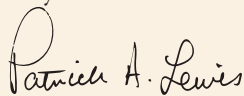
You'll see in reading about our new strategic plan, wellbeing of our whole community—members, staff, board, and the groups we partner with—is a cornerstone of how we live our mission of collecting, preserving, and sharing history. Community means many things at different times.

So far this spring, I've begun my presidency by visiting that community on the road. I traveled to Oklahoma to visit the Miami Nation at their Winter Gathering. The Myaamia have invited us to share in their cultural reawakening and celebrate with them as they reestablish federally recognized Tribal lands in the Wabash River Valley. While there, I drove down for a day in Tahlequah to visit the museums, galleries, and workshops that keep Cherokee culture thriving after removal from Kentucky and our neighboring states to the southeast.

Closer to home, I have visited leaders of museums, historical societies, and local heritage groups in counties surrounding Louisville and beyond. Sustaining a relationship begun when we hosted the Rosenwald Schools exhibit two years ago, I spent a morning at the

Division Street School in New Albany, where children (many of them born to parents who had been enslaved in Kentucky) were first taught in 1884, the same year the Filson was founded. Still today, through the work of volunteer educators like Ms. Oneita Phillips, local history field trips and gifted and talented programs keep those classrooms echoing with children's voices, continuing the mission begun 140 years ago.

That's the Filson community: a pottery workshop in Tahlequah, a 4th grade class in the old wooden desks on Division Street, a historic house in the hills of the southern Bluegrass waiting to share its story with a new generation of visitors. The collections and programs of the Filson connect us with so many people doing transformational work for our region. I am very fortunate to see and experience as much of it as I do, and I hope by joining together as the Filson community we can all share in it together.



Dr. Patrick A. Lewis

President & CEO, The Filson Historical Society

From the Chair

I am so honored to be the new Board Chair for the Filson Historical Society. Thank you for helping us celebrate the Filson's 140th Anniversary during 2024. There are exciting events and initiatives forthcoming in 2025—with a focus on collaboration and partnership. We've started 2025 strong in that regard with more alliance and relationship building to come throughout the year.

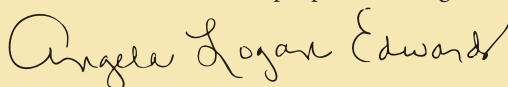
In January, the Filson collaborated with the Louisville Orchestra with support from the Jewish Heritage Fund. *Art and Memory: Louisville's Link to the Holocaust through Der Kaiser Von Atlantis* is available for viewing on the Filson's website under the Events tab at the Filson's YouTube Channel. You will be amazed to learn about this powerful opera composed during the Holocaust.

In February, the Filson partnered with the Kentucky Center for African American Heritage. *Alleyway: Early Residential Patterns of Louisville, Kentucky and What it says About Louisville's Current Residential Patterns*, a

program centered on Louisville's post-slavery housing patterns and Louisville's Urban Renewal, was held at the Kentucky Center for African American Heritage.

Again in February, the Filson hosted a film screening in partnership and cooperation with KET, the Muhammed Ali Center, and the Shelby County Historical Society. *Secrets of the Dead: The Civil War's Lost Massacre* was screened for a wonderful audience at the Muhammed Ali Center.

These are but three examples of the Filson's outreach around Louisville, Kentucky, and the Ohio Valley. We hope you will join us for an upcoming event and introduce a friend to the Filson as well. The support of our members is key to the Filson's accomplishment of its mission to collect, preserve, and share the stories of the people in our region.



Angela Logan Edwards, Board Chair

BOARD MEMBERS

Angela Edwards
Chairman of the Board

James D. Kenney, III
Secretary

Beth Wiseman
Treasurer

Phillip Bond
Assistant Treasurer

Ann Wells
Past Chair

James Allen
Shellie Benovitz
Emily Bingham
Westray Cobb
Marshall Farrer
Ann Georgehead
Daniel Gifford, Ph.D.
Stuart Goldberg
Madison Hamman
Jim Haynes
Michael Jones
Alan Kamei
Susan Dabney Lavin
Chris Morris
John David Myles
Ashley Noland
Clark "Bud" Orr
Phil Poindexter
Ted Steinbock, MD
Lindy B. Street
Anita Streeter
William Summers, V
Carl M. Thomas
Chenault Van Winkle James
Elizabeth "Libby" Voyles
Orme "Sandy" Wilson III

FILSON STAFF

Kayla Aschenbeck
Will Bobrow
Kathryn Bratcher
Hailey Brangers
Kyle Brewer
Sarah Bruns
Jennifer Cole
Hannah Costelle
Shelby Craig
Brenna Cundiff
Jamie Evans
Jacqueline Hudson
Kelly Hyberger
Asia Jewell
Zachary Keown
Maureen Lane
Patrick Lewis
Milos Maldonado
Wesley Miller
Jana Meyer
Ann Niren
Hannah O'Daniel McCallon
Katie Pardee
Alanna Parham
Lynn Pohl
Heather Potter
Scott Scarboro
Brooks Vessels
Kate Wanke

The Filson

is published quarterly by
The Filson Historical Society
1310 S. 3rd St.
Louisville, KY 40208
We welcome your feedback
and story ideas.
Phone: (502) 635-5083
www.filsonhistorical.org
info@filsonhistorical.org

OUR MISSION:

To collect, preserve, and share
the significant history and
culture of Kentucky and the
Ohio Valley.

What's New in Collections

Recent Acquisitions

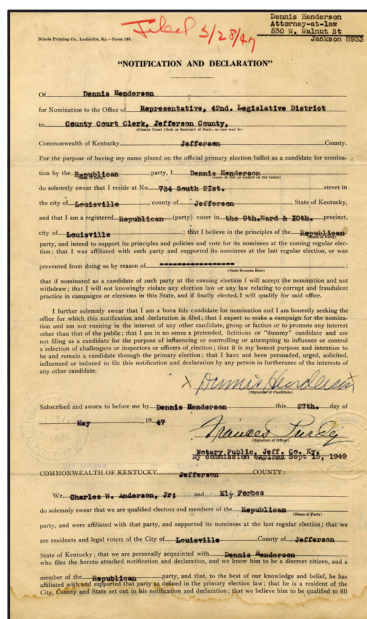


Allen Bush Research Collection on Kinslow Shop of Flowers [025x10]
Kinslow Shop of Flowers was one of the first Black florists in Louisville. The Kinslow family not only sold flowers but also ran a commercial horticulture center and grew the flowers they sold. This digital research collection was donated by family friend Allen Bush, who worked with the Kinslow family. Compiled from 2022 to 2024, the collection includes papers, photographs, and a video. (Donated by Allen Bush)



barber working on Frankfort Ave. in Louisville. The chair is a Windsor model built by Theo A. Kochs Co. in 1881 [2024.35.1]. (Donated by the William W. Heimerdinger family)

Heimerdinger family papers [024x42], photographs [024PC20], and museum objects [2024.35] The Heimerdinger family sold cutlery, barber and beauty supplies in Louisville starting in the late 19th century. Materials include photographs, barber and beauty supplies, patent applications, a W. C. Heimerdinger Co. ledger from the 1920s, and barber and beauty supply catalogs from other regional companies. Pictured here is the first barber chair the W. C. Heimerdinger Co. sold to Ferdinand Hoffman, a



Dennis Henderson (1896–1979) papers [024x56] and photograph collection [024PC37]

Dennis Henderson was the second African American representative elected to the Kentucky General Assembly. His manuscript collection consists of personal papers and papers connected to his legislative career. Items include his diploma from Howard University, a certificate to practice law in the Commonwealth, and correspondence documents from the Kentucky General Assembly. His photograph collection documents life with his wife, Edna Ridgley (1905–1991), his daughter,

Cora Lee, and a host of siblings, grandchildren, nieces, and nephews. Pictured here is a notification document declaring Dennis Henderson's candidacy for the Kentucky General Assembly in 1947 [024PC37.08]. (Donated by Keith Winstead)



Park Aerial Surveys photograph collection [025PC2]

This collection consists of aerial photographs of Jefferson County and southern Indiana from the 1940s to the 1990s. The El Group Inc. purchased these photographs from Park Aerial Survey Inc. for Phase I Environmental Site Assessments. The photographs document the growth around Jefferson County, including Middletown, Jeffersontown, Outer Loop, Valley Station, Dixie Highway, New Albany, and more. Pictured here are aerial shots of Bardstown Rd. and Gene Snyder Freeway in 1951 (left) and 1994 (right) [025PC2 folder 59]. (Donated by The El Group Inc.)



Collection of Kentucky folk art consisting of 23 works [2024.22]

Pictured here is *Portrait of sisters Georgia "George" Miller (left) and Zephra May-Miller (right)*, by Zephra May-Miller (1943–2004), ca. 2000–2003, watercolor on a church hymnal, framed in a trash bag [2024.22.5]. (Historical Acquisition Purchase)

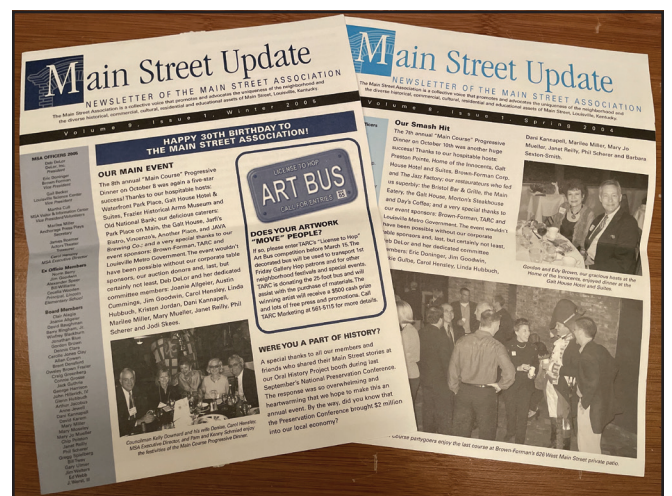


Harlan Hubbard (1900–1988) art [2024.27] The Filson recently acquired four oil/acrylic paintings, one double-sided watercolor, and 80 wood-block prints by Kentucky artist Harlan Hubbard. Pictured here is *Ohio River, 1922*, oil on tin [2024.27.2] ©Florence Fowler Caddell. (Donated by David F. Ward, co-editor of *Harlan Hubbard Journals, 1929–1944*)



NuLu Business Association and "The Green Building" records, ca. 2008–2016 [024x68]

Includes papers and records created and collected by Gill Holland during his tenure as president of the NuLu Business Association from 2012 to 2016. Also includes materials documenting Gill and Augusta Brown Holland's work developing NuLu's flagship arts center, "The Green Building" (2008), a renovated 125-year-old building, Louisville's first commercial Platinum LEED-certified building, and the greenest commercial building



Main Street Association, Inc. records, ca. 1980–2000s [024x66]

The Main Street Association was a collaborative voice that promoted and advocated for the uniqueness of the neighborhood and the diverse historic, commercial, cultural, residential, and educational assets of Louisville's Main Street. Pictured here are samples of the *Main Street Update* newsletter of the Main Street Association, 2004–2005. (Donated by Main Street Association, Inc.)

in Kentucky. Pictured here is a poster for the Second Annual NuLu East Market Festival, October 2, 2010. (Donated by Gill Holland)

Recently Cataloged

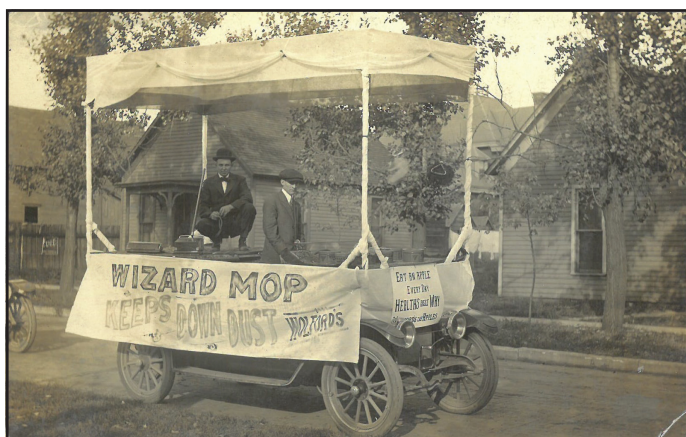
Donald Dufour Stepleton (1909-2003) papers, 1901-2003 [Mss. A S837] and photograph collection, 1927-2006 [024PC15] The correspondence, journals, writings, and photographs of Donald “Don” Dufour Stepleton (1909–2003) document his life near the Ohio River in Switzerland County, Indiana, his overseas voyages with the U.S. Merchant Marine from 1928 to 1930, his solo river voyages and travels across the U.S. during the Great Depression, and his service in the U.S. Army in Italy during World War II. Pictured here is Don Stepleton at his mother Belle Stepleton’s Market Street residence in Vevay, Indiana, early 1940s [024PC15 folder 3]. (Donated by Don’s niece, Ellen Stepleton)



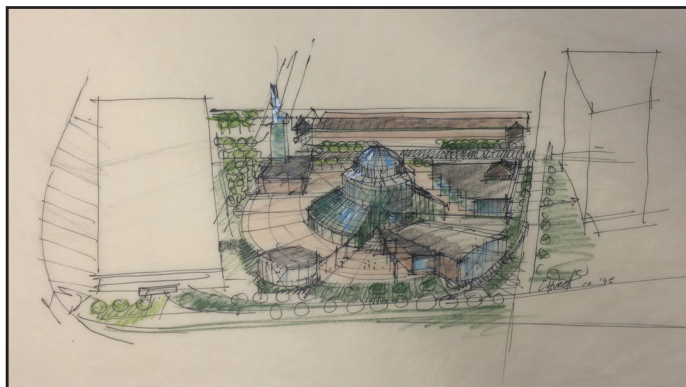
Reed-Carey family papers, 1931-2002 [Mss. A R323] and Allie Carey Reed photograph collection, 1940s [023PC35]. The papers of Dr. Edsel Sherwood Reed (1923-2022) and Allie Carey Reed (1925-) date from before and after their marriage in 1947 in Lexington, Kentucky. They met working at Lexington’s Good Samaritan Hospital, he as a medical intern and she as a nursing student. Edsel Sherwood Reed’s papers include Powell County school notebooks, correspondence, and a scrapbook. Allie Carey Reed’s papers and photos document her years at the Good Samaritan School of Nursing and her high school and nursing class reunions. Pictured here is Allie Carey Reed in front of Good Samaritan Hospital, ca. 1946 [023PC35.03]. (Donated by Allie Carey Reed and her daughter Dr. Patricia Tate)

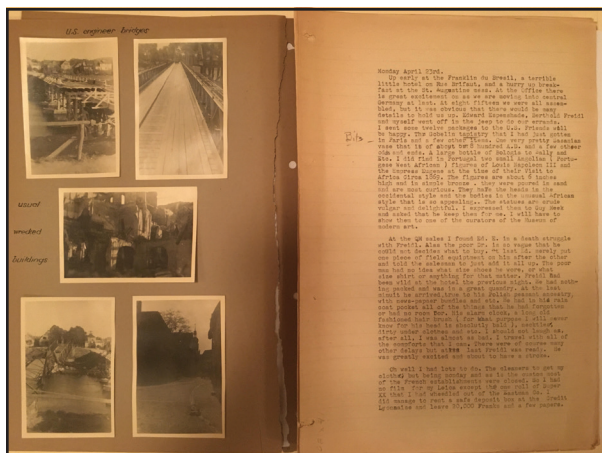


Wolford family papers, 1858-2022 [Mss. A W859], photograph collection [021PC48], and museum objects [2022.17.1-22] Material related to the Wolford family of Linton, Terre Haute, and Versailles, Indiana, and Louisville, Kentucky. The central figures are Leo T. Wolford (1890-1971) and his son Thorp L. Wolford (1918-2012), both of whom grew up in Indiana and worked as lawyers in Louisville later in their lives. Leo also served as treasurer and president of the Filson in the 1950s and 1960s. Pictured here is an advertising float for J.W. Wolford & Sons, a department store in Linton, Indiana, run by Leo Wolford’s grandfather John William Wolford (1837-1922), ca. 1910s [021PC48_f72]. (Donated by John Brenton Wolford)

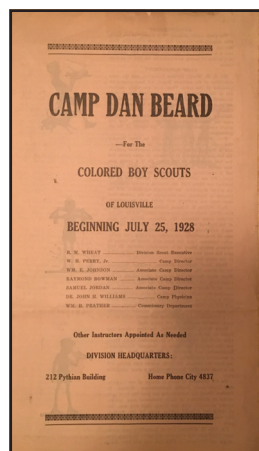


Dan Church papers, 1973–2022, architectural drawings, 1977–2016, and museum collection [Mss. AR C561] Professional papers, architectural drawings, and urban design proposals of architect and planner W. Daniel “Dan” Church, who worked in the Ohio Valley region in the late 20th and early 21st centuries. The collection documents Church’s urban design projects—especially in the areas of parks, streetscapes, and land planning—and showcases his contributions to regional public spaces. Church provided architectural illustration services to visualize and promote clients’ proposed projects, including this aerial sketch concept of a museum cluster at Louisville’s Waterfront Park. (Donated by Dan and Janie Church)





Martin C. Shallenberger (1912–2007) scrapbook, April 1945–1946 [Mss. A S528b] Scrapbook kept by Shallenberger in the closing months of World War II while he served as a consultant to the Engineering Section of the Third U.S. Army, and possibly also to the intelligence service. Shallenberger's daily journal entries are interspersed with photographs and ephemera, especially documenting his travels through war-torn Germany. Pictured here are Martin Shallenberger's journal entries from April to May 1945 describing the Allied advance and occupation of Germany. (Donated by Christina Lee Brown)



Robert Rudd. Black Boy Scouts research collection, 1919–2023 (bulk: 1919–1962) [Mss. A R914] Materials assembled by former scout Robert Rudd regarding the history of Louisville's Black Boy Scouts prior to integration. Includes correspondence and meeting minutes of the Douglass Division Advisory Board from 1920 to 1949, as well as brochures and flyers for Camp Dan Beard, the annual scout camp, from 1924 to 1952. Pictured here is a brochure for Camp Dan Beard, a summer camp for Louisville's Black scouts that was established in 1920. (Donated by Robert Rudd)

Recently Digitized

The Holocaust and the Ohio Valley

The Filson has published *The Holocaust and the Ohio Valley* digital collection online. The project introduces viewers to about 100 documents and photographs related to Jewish experiences in the Holocaust and World War II, Jewish American efforts to support refugees, and historical memory of the Holocaust in Kentucky. The project is unique for providing the first online set of textual and photographic documentation of Kentuckians and the Holocaust from Jewish perspectives. Jewish Heritage Fund interns Jackson Bogel and Hayley Salo contributed skilled research, digitization, and metadata work for the project.

One family included in the collection is the Wolff family from France, whose passport photos and stamps are shown here. Denise Hirsch Wolff (1909–2000) was married to Jacques Wolff (1903–1977), and they had two boys, Francis Wolff (1931–2014) and Hubert Wolff (1938–2020). The collection documents their resilience and loss during German occupation, navigation of immigration bureaucracy, and new lives in Louisville.

Explore the collection online through filsonhistorical.omeka.net or use the QR code.



Jewish Heritage Fund



In Grateful Remembrance

Joan Carr Rapp Brennan

(1931–2025)

by Jennie Cole and Aaron Rosenblum

It is impossible for me to express the impact that my friend Joan Brennan, a devoted weekly Filson volunteer from 1995 through 2020, had on me professionally and personally. I've spoken with so many of my current and former Filson colleagues over the past few weeks, and all of us join her family and friends in mourning her loss while celebrating her impact. My former colleague Aaron Rosenblum wrote the following memorial, which does a stellar job at sharing all that was our Joan.

When I began working at the Filson in 2013, I didn't expect to meet someone there who had seen Paul Robeson perform as Othello on Broadway. Nor did I expect to meet someone who once rode the train from Poughkeepsie, New York into New York City with Eleanor Roosevelt. Nor someone who had once made dinner for and dined with Paul Newman. Regardless of my expectations, there was Joan Brennan, who I met soon after being hired. We quickly discovered that we were both New Yorkers who had found a home and community in Louisville, and that we shared much in our sensibilities and outlooks. Over time I learned all those other fun things about Joan's biography that I found so novel and compelling, none of which are what made her such an amazing individual,

For the next eleven years I had the joy of knowing Joan and considering her a friend. At the Filson or out at lunch, in her home in Louisville or on her porch in Maine, she was

always willing to offer her wit, wisdom, and intellect to any issue we discussed, whether personal or professional, or to recommend or be recommended a book.

The work Joan did for the Filson, recataloging collections that had originally been added in an era when it was only the actions of heads of households, mostly of white men, that were noticed and noted, was almost endless. With a box of archival materials, a yellow legal pad, and a pencil, Joan gave the task her full attention and surfaced countless unrecorded names and happenings, all in service of a more complete historical record of the Ohio Valley. We cannot know how many researchers her work helped; how many stories she made accessible.

After moving to Maine in 2020, my wife and I were delighted to visit with Joan on Cushing's Island, on Casco Bay. It was a pleasure to see Joan utterly at her leisure, in a tough, beautiful landscape that mirrored much about her. Every time we visited her there, even though her home couldn't have been easier to find from the boat dock, Joan would be standing at the landing waiting for us. And after a few hours of porch-sitting and sharing a meal, or a walk around the island, when it would be time to catch the last ferry back to shore, she never let us go without accompanying us back down to the landing and seeing we were safely aboard. The last time I saw Joan was on a visit to Louisville in the spring of 2024, but the enduring image I will keep is Joan casting off the stern line of the little ferry from Cushing's, then waving us off as the ferry pushed into the waves for shore.



PEOPLE PASSAGE PLACE

STORIES OF THE
OHIO VALLEY



Located in the Nash Gallery, *People Passage Place* is a semi-permanent exhibit that uses the Filson's vast collections to share stories that shape the social and cultural fabric of the Ohio Valley. The art, artifacts, photos, and manuscript material on display have been selected to challenge preconceptions and explore multifaceted perspectives of our region. As the Filson continues to collect new objects and collaborate with community members, the content of the exhibit is rotated periodically to showcase new and important stories.

This exhibit is generously
sponsored by:

**Stock
Yards**
Bank & Trust
SINCE 1904
MEMBER FDIC



BUSTLES TO BLUE JEANS

Highlights from the Filson's Fashion Archive

The Filson's museum collection contains over 5,000 garments from as early as the 1810s worn for every occasion—Victorian weddings and roaring '20s parties, baseball games and cycling trips. And our collection has only grown in the past year, with a huge influx of new pieces recently transferred from the Kentucky Science Center.

Yet while our manuscript and photograph collections are seen often in social media posts, publications, and reading rooms, the public has only been able to view a tiny fraction of the Filson's fashion archive over the years—just an occasional peek in the closet.

This April, we're opening the closets wide. We'll be showing off some of our most unusual, storied, and beautiful garments—from ball gowns to bathing costumes, bustles to blue jeans. These are our favorite pieces to look at and talk about, and we can't wait to share them with you.

Bustles to Blue Jeans: Highlights from the Filson's Fashion Archive opens in the Bingham Gallery Friday, April 25, with a public opening reception from 5:30-7:00 pm. All participants are encouraged to register in advance.

BINGHAM GALLERY

APRIL 25-AUGUST 15

This exhibit is generously
sponsored by:

**Stock
Yards.**
Bank & Trust
SINCE 1904

NEW STRATEGIC PLAN

In 2024, the Filson Historical Society wrapped up an ambitious 3-year strategic plan and also celebrated its 140th anniversary. We wrote that plan as we were coming out of pandemic shutdowns and a nationwide conversation about inclusion and representation that focused on our city. We needed to be bold to try new things, find new audiences, push the capacity of this institution, and challenge ourselves to step up to the work that needed doing.

Over the past year, a working group of staff and board developed a new plan, for the next three years, 2025–27. This is a focused, intentional plan that we all share a part in—staff, board, volunteers, members, patrons. We all have committed to set goals for ourselves, our committees, and our departments that address each of these objectives. This strategic plan recognizes that we are all responsible for the success of our organization, making everyone feel welcome and empowered.

We have launched innovative programs, we have attracted new members, we have hired new staff. More Filson members attend programs and visit for research than ever. It is our priority that we create the best experience possible for everyone in the Filson community. Staff should be proud of their work and be supported in their professional journeys. Members, no matter their background, should see themselves represented in our publications, programs, exhibits, and collections. We should strive to put the knowledge that we create in the hands of decision makers and leaders, driving change at all levels. We will use our perspective on the past to build a better future. The Filson under this plan will grow organically and sustainably because of how authentically, passionately, and professionally we live this mission.

We want people to be attracted to our best-selling authors, to our award-winning publications, to our remarkable collections. We want people to stay because they share a bedrock commitment, with this community of people, that history matters. It allows us to find commonality and communicate across differences to build the more perfect union that we are always seeking. In that community we care about the work, we care about its impact, and we care about one another. Across all the 140 years of this organization's history that care is what has kept this organization healthy, vibrant, and vital. We believe in what the Filson does and how we do it because we have faith in the people with whom we share that mission with. Join us.

STRATEGIC PLAN 2025-27



* SUSTAINABILITY

- Identify and focus on the activities and services that best advance the mission and work to maximize their impact
- Expand membership and participation by addressing barriers to access for communities and individuals with lower prior engagement with the Filson
- Maximize the effective use of resources including time, space, and funds across the organization



* WELLBEING

- Create a culture of commitment, collaboration, respect, transparency, and trust across the board, leadership, and staff through meaningful dialogue and investment in solutions
- Create structured assessments of organizational wellbeing and invest in solutions to identified problems
- Expand opportunities for education and awareness about operations and activities across the board, leadership, and staff



* ENGAGEMENT

- Build a supportive network of individual and organizational collaborators in business, government, and nonprofit sectors in the Ohio Valley region
- Assess initiatives, events, and relationships for their mutual benefit to the Filson, its partners, and the broader cultural and civic life of the region
- Identify and demonstrate creative strategies, media, and platforms to maximize awareness of the Filson in the Ohio Valley region

The Filson Historical Society Awards Three History Inspires Fellowships for 2025

The Filson Historical Society is pleased to announce the recipients of the 2025 History Inspires Fellowship (HIF). This unique program allows artists to interpret the Filson's collections with a creative filter.

In recent years, the Filson has established relationships with regional artists, either through the artists' donations of materials to its collection or by artists conducting research for creative projects. The HIF program builds upon those relationships by promoting the

Filson Historical Society as a resource for artistic scholarly research and inspiration while strengthening the bond with the creative community.

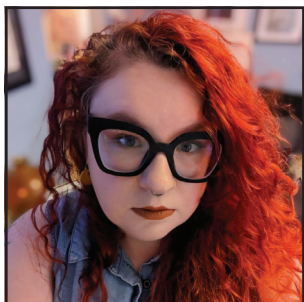
For the 2025 cycle, 13 applications featuring a wide array of creative project ideas, were reviewed by a cross-departmental committee made up of six Filson staff members. Of the 13, three were selected to receive the fellowship. The recipients are as follows:



Lori Larusso is an American visual artist working primarily with themes of domesticity and foodways. Lori will find inspiration from the H. Harold Davis collection of food photography and the Kentucky cookbook collection to create a series of paintings and small installations.



Moria Magre is a Mixed Media and Cosplay Artist who will explore articles of clothing in the Filson's collections that predate the ready-made paper sewing patterns that began in the late 1910s, virtually deconstructing the clothing and creating downloadable patterns to share.



Sarah Pennington an artist and writer will research the Filson's materials related to suffrage in Kentucky and use a docupoetic approach, a style of writing that incorporates poetic techniques such as erasure, collage, found poetry at the Filson, and poetic retellings of events to create a manuscript that will showcase the history of voting rights and disenfranchisement in the region.

The History Inspire Fellows began their research in January 2025 and meet with Filson staff on a regular basis to discuss their progress. Each project for this cycle will conclude in Fall 2025 with an event sharing their project. These events will be open to the public and dates will be announced in the second half of the

year. In 2026, an exhibit at the Filson that will feature several of the artists' work alongside the items utilized from the Filson's collection.

To learn more about the Filson's fellowship programs, please visit filsonhistorical.org/about-us/fellowships.

Monday, June 16, 6:00-7:00 pm | Hybrid

Brown Theatre, 315 W. Broadway, Louisville

Free for members (use promo code FILSON for up to six free tickets), \$27.50 for potential members

Tickets may be purchased online at kentuckyperformingarts.org or by phone at (502) 584-7777

The Fate of the Day

The War for America, Fort Ticonderoga to Charleston, 1777–1780

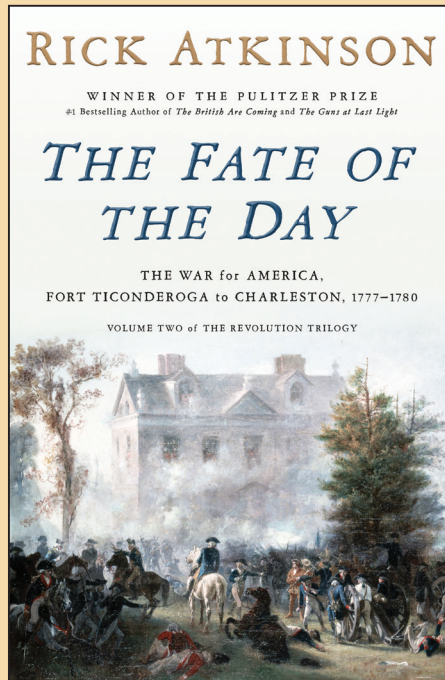
Rick Atkinson

In the second volume of the landmark American Revolution trilogy by the Pulitzer Prize-winning and #1 New York Times best-selling author of *The British Are Coming*, George Washington's army fights on the knife edge between victory and defeat.

The first twenty-one months of the American Revolution—which began at Lexington and ended at Princeton—was the story of a ragged group of militiamen and soldiers fighting to forge a new nation. By the winter of 1777, the exhausted Continental Army could claim only that it had barely escaped annihilation by the world's most formidable fighting force.

Two years into the war, George III is as determined as ever to bring his rebellious colonies to heel. But the king's task is now far more complicated: fighting a determined enemy on the other side of the Atlantic has become ruinously expensive, and spies tell him that the French and Spanish are threatening to join forces with the Americans.

Prize-winning historian Rick Atkinson provides a riveting narrative covering the middle years of the Revolution. Stationed in Paris, Benjamin Franklin woos the French; in Pennsylvania, George Washington pleads with Congress to deliver the money, men, and materiel he needs to continue the fight. In New York, General William Howe, the commander of the greatest army the British have ever sent overseas, plans a new campaign against the Americans—even as he is no longer certain that he can win this searing, bloody war. The months and years that follow bring epic battles at Brandywine, Saratoga, Monmouth, and Charleston,



a winter of misery at Valley Forge, and yet more appeals for sacrifice by every American committed to the struggle for freedom.

Timed to coincide with the 250th anniversary of the beginning of the Revolution, Atkinson's brilliant account of the lethal conflict between the Americans and the British offers not only deeply researched and spectacularly dramatic history, but also a new perspective on the demands that a democracy makes on its citizens.

Rick Atkinson is the #1 New York Times bestselling author of seven previous works of history, including *The Long Gray Line*, the Liberation Trilogy (*An Army at Dawn*, *The Day of Battle*, and *The Guns at Last Light*), and *The British Are Coming*, the first volume

of the Revolution Trilogy. He has won numerous awards, including Pulitzer Prizes for history and journalism.

Praise for *The Fate of the Day*

"Rick Atkinson takes his place among the greatest of all historians. This superb second volume in his Revolution Trilogy is that rare narrative that keeps you on the edge of your seat. Familiar characters become dimensional and complicated, new ones burst to life vividly, and the battles and struggles that created our country now have clarity and meaning."

—Ken Burns

SCAN QR CODE TO REGISTER ONLINE TODAY!
(Members can use promo code FILSON for up to six free tickets)



We Did It—And Then Some!

Thank You for Helping Us Surpass the \$140,000 Donor Challenge!

We are thrilled to announce that, thanks to the incredible generosity of our community, the Filson Historical Society has not only met but exceeded our 140th Anniversary Donor Challenge goal of \$140,000 by raising more than \$281,000 in increased gifts from our supporters in 2024!

A heartfelt thank you to our dedicated supporters and board leaders whose contributions made this milestone possible:

William Alden, Elizabeth and Richard Clay, Holly and Joe Gathright, Jim and Sara Haynes, Robert Kulp, Kathy and Bud Orr, Ted Steinbock MD and Sarah Martin, Sharon* and John Stern, Lindy B. Street, Ellen and Carl Thomas, James and Elizabeth Voyles, Ann and Darrell Wells, and Mary and Orme Wilson.*

Your generosity strengthens the Filson's ability to preserve and share the rich history of Kentucky, southern Indiana, and the Ohio Valley region. As we celebrate 140 years of historical stewardship, this remarkable achievement fuels our commitment to education, research, and community engagement.

Thank you for ensuring the Filson's legacy continues to thrive for generations to come!

Susan Abbott-Jamieson
Carol A. and Sandy Abrams
Lucy Ackerson and Frank Knights
Cynthia M. Adelberg
Elizabeth Bottorff and Mark A. Ahlemann
Edwin M. Ahrens M.D.
Allen AJ Alt
John Akre
Martha Alexander
Mary Alexander and John H. Downard
Ann T. Allen
Missy and James Allen
Elmer Lucille and Michael Charles Allen
Ed & M.A. Allgeier
MaryBeth Allison
Angela Alonso
Fred Alread
Madeline Alworth
Steven Amos
Susan H. and Christopher E. Anderson
Mark Anderson

Robert Andres
Julie Anzelmo
Lindsey Apple
Damon Arhos
Carol Armstrong
Allison Arnett Gillum
Norbert Arrington
Charles R. Arterburn
Randi Austin
Alfred Awkard
Leslie Axel
Judith and Robert Ayotte
Perry Bacon
Nancy Bain
Scott Baker
Holly Baldwin
Linda Jones and Charles Ball
Rogers R. Barde
David Barhorst
Dave Barker
Laura Barkhauer
Michelle Baron
Leslie E. Barras
Page and John Barrow
Gregory L. Barton
Wayne Basconi
Hilary Beall and Joe Tesoriero
Phillip Beaman
W. Robinson and Barbara Beard
Corey Beatty
Kathy and Joe Becker
Bruce Beeber
David Bell
Karen A. and W. Neale
Bennett IV
Susan Bentley
Harris J. Berman
Nita Bernat
Brooke A. and Mary Rose
Beyerle
Rebecca Beyerle
Kim and Simone Bianconcini
Jackie Hays and
Paul J. Bickel III
Linda L. Biere
Nancy Biggerstaff
William A. Billingham
Dale Billingsley
Edith S. Bingham
Sallie Bingham
Elizabeth Bingham and
Ryan Rogers
Emily S. Bingham and
Stephen Reily
C. Barret Birnsteele
James Bishop
Paula Bishop
Nancy W. and Chris J. Black
Lyn and Thomas Black
Shane Blackmer
James Blair
Jennifer Blair
Elizabeth C. Bleakley

Jody and Tom Block
Judith J. Bloor and David
Brandt
Judith S. and Danny J. Boggs
Wanda M. Bohannon
Sharon and Phillip Bond
Charles W. Bond
Cornelia W. Bonnie
Lynn S. and Robert D. Boone
Susan G. Bornstein and
David B. Fox
James Bourne
Erin Bowe
Marilyn and Brooks H. Bower
Kaye Bowles-Durnell
Anne W. Bowman
Dotty Bowman Wettig
Anne T. and Morton Boyd Jr.
Rebecca Boyd
Peggy Bradley
Brenda and Jack Brammer
Cassie Bratcher
Robert Carl Braverman
Richard M. Breen
Pamela E. Brett
Laura and Kyle Brewer
Diane M. Brewer
Joyce Bridge
Paula Brockman
Holly Brockman and Steven Fick
Susan and Jim Brodfehr
Eddi A. and Gordon S. Brown
Eli H. Brown IV
Prentice Brown
Gregory Brown
Robert Brown
Cary Brown and Steven Epstein
Carolyn Bruce
Rebecca B. Bruner
Natalie Bruner
Brent Bruner and
Matthew Carter
Marilyn Bryant
Joan Buchar
Ellen Buche
Kristi and David Buck
Paul Bufkin
Jane E. Burbank
Jill and Christopher Burckle
Dorene Burke
Ishmon F. Burks
Beth Burks
Carol Butler
Damon Winston Byrd
William and Elizabeth Cahaney
Barbara Ann and James C.
Callahan
Laurie and Bob Callander
Lloyd J. Callaway
Susan and Jeffrey P. Callen
Missy Camp
Cynthia Campbell
Carol and Robert Carnighan

Kathryn Carnighan
J Scott Carothers
Nancy Carr Robertson
Hallie Carroll
Kathy Nash and William H.
Cary IV
Lindy Casebier
Martin Casper
Brendan Cassell
Kevin Scott Caye
Heather Cecil
Michael Chambers
Linda Chambliss
Larry Chandler
Brian Chandler
Judy Chaney
Carol Christianson
Nancy Church
Gretchen and John H. Clark IV
Nell Clay
Denise Clayton
Deborah and Nelson E.
Clemmens
Ruth H. Cloudman
Anna Coats
Ann Cobb
John Cochran
Jennifer Cole
Ryan Cole
Amber Coleman
George and Francie Coleman
Malinda Coleman
Rick Coleman
Barbara Collins
Veronica Combs
James Conti
Laura Cook
Cynthia Cooke
Michael Cooper
Dave Cooper
Cheryl Cooper and Walter
Crutcher
Deb Copeland
William H. Copher Jr.
Charlie Corbett
Christopher Corcoran
Deborah and Adam Cornett
Coleen Costar
Jennifer Cottingham
Susan Coventry and Bradley
Asher
Linda Scholle Cowan and Fred
Cowan
Patricia C. Cox
Agnes Karleene Cox
Holly and Robert Crady III
Tonja Craig
Michael Crain
Katherine and William W.
Crawford Jr.
Kevin Crean
Elaine R. and John R.
Crockett III

* Deceased

Mary Anne and Charles Cronan	Jerome K. Finn	Rita G. Greer	John Hollis
Tom Cross	Judith Fischer	Rachel B. Grimes	Pippa Holloway
Carol and Dale Edward Crossman	William Fischer	Annette Grisanti and Michael	Paul Holstein
Glenn Crothers Ph.D.	Robin Fisher	Kemper	John Holt
Ellyn Elise Crutcher	Betsy Fitch	Sarah Grise	Margaret P. Hood
Denise Cullen	Maureen Fitzgerald	Thomas L. Grissom	Charmagne Horn
Philip Cullen	Marjorie FitzGerald and Tom James	Ellen Grosovsky	Sharon Horton
Brenna and Jordan Cundiff	Margaret C. Flowers	Andrew Gross	Patricia B. and Thomas A. Howard
Bill Cunningham	Susan B. Foley	Elliot Gross	Patrick Howington
Anthony Curtis	Edwin S. Foote	Rob Gross	Bixler W. Howland
Bernadette Dahlem	Jennifer M. Foran M.D.	Monica and Dominic Guarnaschelli	Mary Ann and Gerald G. Hubbs
Juliana Daly	Brandt Ford	Alexis Guilbault	Linda Hudson
Denise Davis	Cody Foster	Sandal H. Gulick	Gary Hudson
Mary J. Davis	Virginia Gaines Fox	Rebecca and John R. Guthrie	Clay Hughes
Shellia J. and Melvin S. Davis	Jeffrey Frakes	Caroline Guthrie	Lounette Humphrey
Megan Pillow Davis	Sandra and Charles Francesconi	Jane M. Haase	Charles and Carol Hurst
Louisa and Joe Davis	Wesley Francis	Sharon Hager	Daniel Ibarrondo
Kelley and Bruce Dawkins	Leslie Francis	Paula Turner Hale	Maureen C. and Carl W. Isaacson
Peggy C. and Harold E. Dawson	Judy Franklin	Ann Hall	Kathleen and Michael Ishler
Susan Day	Jeanne Freibert and Peter Gronet	Chris Hall	Chenault James
Danielle DeFerraro	Doris and Joseph Freshley	Lena and Matthew Hamel	Joy and Lynn Jamison
Cynthia Deitz	Lloyd Fry	Ann Hamlin	Elizabeth Jenkins and John Ball
Easton Depp	Wanda Fuller	An and Madison Hamman	Carol Jenner
Diana DeV Vaughn	Linda Bixby Fulmer	Elizabeth A. and John Hancock	Judi Jennings
April and Terrell Dickey	Clifford Furman	Margaret Handmaker	Diana and Steven Jester
Lynda Dickson	Patricia Gabriele	Carol A. and Charles L. Hankla	Christine and John Johnson
Barbi Pryor Diehl	Robert F. Gaeta	Roger David Hardesty	Michael E. Johnson
Shannon Disbennett	Edgar Gankendorff	Sarah and Mike Harlan	Michael R. Johnson
Steve Dobler	Jesse Gant	Shirley and Paul Harmon	Jackie Johnson
Nancy Doctor	Gregory Gapsis	Vinda L. Harned	Charlie Johnson
Dennis Dolan	Angela Gardiner	Eileen and Mike T. Harpring	Marcia Johnson
Melanie and David G. Dowell	Louise Farnsley Gardner and	Robin R Harris	Craig Johnson
Barbara Doyle	Michael Gardner	Paula and Frank Harshaw	Margi Johnstone
Patrick Doyle	Gordon Garner	Chris Hart	Helen H. Jones
Beverly Boone Drake	Dana M. Garrison	Dan Hartlage	Ginny and Lawrence M. Jones
George Dreger	Linda Gassman	Barbara Reid Hartung	Michael L. Jones
Marilyn and Gordon Duke	Joan and and G. L. Gaston Jr.	Mary and James Harty	Yvonne Jones
Michael E. Dunn	John Spalding Gatton	Amelia Allen Hartz	Carla Jones
Emily Durrett	Stephen C. Gault	Keith Hartzler	Tom Jones
Roger Dutschke	Andrew Gentile	Jahnna Harvey	Anne and Alfred S. Joseph III
Angela D. Dworin	Lewis and Ingrid Gentry	Peter Hasselbacher	Sherry Joseph
David Eager	Erin and Stephen George	Ann Hassenpflug	Alan and Shelly Ann Kamei
Mary G. Eaves	Evan George	Sheri Hatter	Dani and Douglas Kannapell
Marcia Ebbs	Robert E. Gieszl II	Henry W. Heimerdinger	Jan S. Karzen
Steve Ebbs	Cathy Gilbert	Katherine Heise	Jeanette B. and James E. Kays
Janis and Rob Eberenz	Eleanor Gill	Robert Heleringer	Susan and Bradley Keller
Kathleen Eberwein	Jack and Elizabeth Gillette	Hunt Helm	Patrick Kennedy
Bill Eckrich	Deborah and David Gilmore	Rodney Henderson	Judith and James Kenney
Evie and Charlie Edinger	Susan and Mark Glazer	Ann Henderson	Robert Kenney
Angela and Brian Edwards	Andrew Gleeson	James R. Hendon	Steven D. Kerrick
Kathy and Thomas Michael Egan	Vickie and Shawn Glisson	Elizabeth G. Hendricks	Linda R. and John L. Kiesel
Robert J. Ehrler	Clarence Glover	Rebecca Henle	Gina Kinchlow
Mary Joyce McCrocklin Eibeck	Carolyn Godbey	Gail Henson	Kristen Kindoll
Maris Elder	James Goetz	Shawn M. Herron	Mary H. Kipka
Anne Eldridge	Jeffrey Goforth	Jerry Hibbits	Stuart Kirk
James A. Ellis	Michael Goforth	Karen and Edgar Hill	Kathryn and Jeffrey Kirk
Linda and William L. Ellison Jr.	Jeffrey Goldberg	Bob Hill	James T. Kirkwood
Stephen Enkema	Jill Golden and Zachary Wasserman	Ann Hill	Stephen Kirzinger
Vicki and Donald Ensor	Jane Goldstein	Meg and Jaci Hinchey	Sandra and David A. Kissling
Philip Eschels	Diane and Kenneth Gollither	Tommy Hines	Leo Klarer
Daymon Evans	Connie B. Goodman	Julie and Mike Hinson	Janet Klein
Heather Evans	Steven Goodman	Theresa Hinton	Risa Kobay
Tyler Fairleigh	Marcus Goodrich	Robert Hirsch	Karen Koch
James Edward Fall	Frankye Gordon	David Hise	Leroy Koch
Hulyn Farr	Jack Gotting	Clarence Hervey Hixson	Joan E. Koehrig
R. Bruce Farrer	Nancy and George Gow	Constance P. and Willis W. Hobson	Sabrina Koester
Heather and Marshall Farrer	Steve Gravatte	Janet and Jonathan Hodes	Marjorie and Robert Kohn
Cheryl A. Farris and Robert Coomes	Susan A. Gray	Anne Stanley Hoffman	Ben Kootsra
Moira Fiedler	Bonnie Burks and William P. Gray	Glendon Hogan	Mary Korfhage
Eudora Grace Filson	Deborah Greenwald	Pamela Hogan and Cliff Krause	Lydia Kowalski
Bernie Fineman	William Greenwood	Christy Holland	Carol and Edward Kraft

Christine M. and Ross G. Kreamer	Galelyn McElroy	Penny Pearson	Terry A. Sakach
Jean Kreke	Ailsie B. McEnteggart	Penny H. Pearson	Patrick Sartor
Bruce Krohmer	Heather McHold and Stephen Campbell	Joseph Pearson	Carol and Milan Savkovich
Teresa Kruse	Cheryl McMillan	Deborah Perlstein	Vivian Ruth Sawyer
Anna Kunzler	Susan McNeil-Marshall	Susan Peters	Megan Saylor
Stephen Kurachek	Brandon McReynolds Ph.D.	Kathryn and John Pfigston	John Schaaf
Frank E. Kuzmits Ph.D.	Donna Meacham	Jim Phelps	Ann and Ivan Schell
Nancy Lampton	Sheila B. Mead	April Pickard	Joseph Schiff
Leslie and Dan Lanham	Susan and Bob Means	Laura Ping	Denise Schiller
Willie Ann Lansing	R. Wathen Medley Jr.	Dale Piper	Jennifer Schiller
Amy and Sterling Lapinski	Aline Meeker and Michael Widerschein	Alan Pirtle	Ben Schmidt
Linda E. LaPinta	Stephanie J. Meeks	David Pitchford	John Schmidt
Nicolas Laracuento	Sharon Merker	Elizabeth and Philip Poindexter	William Schneider
Shirlee A. LaRosa	Atha Meyer	Andrew Pomerville	Thomas J. Schnurr
Kate Shapira Latts and Allan Latts	Sheilah and Stanley R. Miles	Nathaniel Poor	Douglas Schroeder
Susan and Allan D. Lavin	Dan Miller	Eugenia K. and John W. Potter	Jane Schultz Weiner
Lindsey and Steve Lawrence	Corey and Elizabeth Miller	Helen Condon Powell	Kenneth Schwalbert
Gay Lawton	Chan Milton	Carol Powell	Brenda Scott
Philip R. Lawver	Angie Mimms	Mona Powell	Shirley A Scott
Preston P. Lee	Michele Mink	Mark Power Smith	Margaret Seay
Nancy W. Lee	Anthony Minstein	Elizabeth Prater	Liz Sedler
Julie Leidner	Vycki and Anthony Minstein	Dee and Bill Pregliasco	Marsha Segal
Caleb Lesch	Michele Mitchell	Doug and Caroline Pringle	Caroline Lussky and James Segal
Carolyn H. and W. Edwin Lewis	Elizabeth and Guy Montgomery	Jess Pritchard-Ritter	John E. Selent
Linda Lewis	Gwen and Darren Mooney	Kenny Pritchett	David Seligson LTC
Lydia Lewis	Charles F. Moore	Julie Purcell	Heath Seymour
David Lewis	Anne Stokes Moore	Terry L. Pyles	Tim Shaffer
Sharon S. Lillie	Gregory H. Moore	Susan M. Rademacher	Phyllis and Michael Shaikun
Sally and J. Cooper Lilly	Debbie Moorhead	Wynn Radford III	Lorraine Shannon
David Lipp	John Morgan	Rebecca and Frank Radmacher	Ellen and Max Shapira
Patti Lister	Chris Morris	Lauren Rafferty	Judith Shapira
Kathleen Llewellyn	Patricia and Thruston Morton	Andrew S. Ragland	Nancy and Darrell E. Shelton
David Lohr	John Moteff	Charles S. Raith	Michael R. Short
Mark Long	Carolyn and Michael B. Mountjoy	Matthew Raj	James Sickel
Blair and Hunter G. Louis	Anne T. Murner	Ryan Ramsey	Mary Ellen Signorille
Lois S. Louis and David B. Ratterman	Debra and Ronald J. Murphy	Thomas Rankin	Robert Silverthorn
Janice Lovelace	Jessica Murphy	Andrew C. Rapp	William H. Slavick
Aaron Lubrick	Janie and Austin Musselman Jr.	Mitch & Cindee Rapp	Helen Cohen and Larry T. Sloan
Mark Lucas	Theodore T. Myre	Karen F. and George H. Raque	Amy Smalley
Claire Lukacs	Howard Natalie	Dan Rechter	Glenn W. Smallwood Jr.
Abby and R. Fairleigh Lussky	Martha Neal	Rebecca and Richard Reed	Karen and Farrell Smith
Tom Lynn	Kate Neikirk	Susan Reigler	Barbara K. West and Vertner D. Smith III
Judith Lyons	Brooks Nelson	Bonnie Reuling and Leroy Smith	
Sally D. and Stanley K. Macdonald	Phillip B. Newman III	William Rhodes	Stephanie and Jonathan Smith
Maud Welch and John MacLean	W. Barrett Nichols	James Rice	Tina Smith
Barry Madden	Beverly Nichols	Ann and Douglas Rich	Cy Smith
Kerry Madrick	Christopher Shea Nickell	Patricia Riemann and Mark Ohlson	Carrie Smith
Linda Magruder	Ann Glazer Niren	Cynthia Rigby	Joseph Smith
John Charles Mains	Karen Nolan	Larry Riley	Barbara Smith Somerville
Anna Maltese	Cheri Casey and Aldis Norgello	Claudia and Tom Riner	Stasia Snyder
Francis Manion	Yvette Norsworthy	John L. Roberts	Anita and Todd Solomon
Vickie Mann	Thomas Nugent III	Keith Roberts	Gary Sommer
J. Davis Marret Jr.	SK O'Brien	Claudia and George W. Robertson	Kitty Spalding
Burwell K. Marshall III	Paul O'Brien	Richard Rodahaffer	Rita Spalding
David Marshall	Sayre O'Cull	Martha B. Rodes	Ginette and John Speed
Kenny Martin	Karen O'Daniel	Jerry Lee Rodgers	William G. Speed Jr.
Mike Martin	Anne Brewer Ogden	Melissa Ronayne	Bernard Speevack
Nancy C. Martin and Fred J. Hendler	Lois Okeefe	Mitzi Fields Root	Charles Staff
Jerry W. Martin M.D.	John Orr	Douglas P. Rose	Kristyn Stasel
Lois Mateus	Joseph Ortmeyer	Becky D. Rotan	Janet Steffens
Garry W. McCandless Sr.	Tombo Owen	Marcia and Bruce Roth	Sherry L. and Allen F. Steinbock
Turk McCleskey	Debbie Owens	John G. Roth M.D.	Susanne Steinbock
Joan D. McCombs	Nancy Oyler	David Rouben	Joe Stephenson
Angie McCorkle Buckler	Davalyn Palmer	Michael Rouse	Maggie M. Steptoe and Alfred L. Spotts Jr.
Sophia McCrocklin	Joseph A. Paradis III	Mary C Rousselot	Sheela Stevens
Claire McCurdy	Laura Conrey Parrott	Paul Rowe	Kate Stewart
Arlette McDaniel and Robert Uhl	Diane Partridge	Lisa Ruble	Mary Clay Stites
Matt McDermott	Jennifer Payton	Paul W. Ruka	Alice and Walker Stites III
Sharon McDonogh	Sarah Pearrow	John Rumisek	William S. Stodghill
Roger McEachron		Janet Rupp	Susan B. Stokes
		Karl Ruttan	

Joan S. and Edward M. Stone
 John Stone
 Anita Matton Streeter
 Rosalind Streeter and Willard Crawford
 Eileen Strenecky
 Barbara Strother
 Susan and David Struck
 Ann D. Sturgill
 Tyler Swann
 Maurice Sweeney
 Karen Sweets
 Stacy Swenck
 Nancy L. Swift
 Laura and Kirk Swigert
 Catherine Vogt Talamini
 Emma McElvaney Talbott
 Emily Talbott
 Richard Taylor
 Timothy Taylor
 Nancy C. and Charles E. Teeple
 Leah Tenney
 Kristine L. and T. Rankin Terry Jr.
 Ann Tettlebaum
 Randall Thomas
 Erin and John Thomas
 Delores Thomas-Marshall
 Linda Thompson
 Karen Thompson
 Mary Anne Thornton
 Meryl Thornton
 Diane and David Thurmond
 Kaitlyn Tisdale
 Louise Todd
 David Tomes
 Ann R. Towles
 Daniel Trabue
 James Trimpe
 Martha Trotter
 Leslie Tucker
 Sandra F. Tuley and Neil S. Weiner
 Arlene P. Tuttle
 Gail Tway

Samuel Gwathmey Tyler III
 Amanda Tyler
 John W. Russ and Cheryl Ungerleider
 Scarlett Upchurch
 Janet Upton
 Sally Nixon and R. Thorne Vail Jr.
 Patricia S. and Michael B. Vairin
 Herbert Van Arsdale II
 Joyce Van Berkel
 Laurance B. VanMeter
 David Vatter
 Jose Vazquez
 Ellen K. and George Venhoff
 Carrie Vittitoe
 Irina Volkova
 Eric L. Waggoner PE, PMP
 Amy and Bill Wagner
 Stephanie Wagner
 Harrison Wainwright
 Virginia Walker
 Jerome and Annette Walker
 Lynn Walker and J. Keith Auerbach
 John Hardin Ward IV
 Teka Ward
 Will Warner
 Robert Waterman
 Tom Waters
 Theodore Wathen
 Lowry Rush Watkins Jr.
 Porter Watkins and George R. Bailey
 Barry Waugh
 John Webb
 Valerie Weber
 Joanne Weeter
 Jane Ann Wehner
 Joan and Steve Weidman
 Beverly and David Weinberg
 Andrew Weinberger
 Terry and Morris Weiss
 Aly Weixler
 Cynthia B. Welch
 Laura Welch

Marilyn Wellman
 Claudia C. and Kendrick Wells III
 Stanley Wells
 Chris Welsh
 Marilyn and John J. Werst III
 Kaaren Westlund
 Benjamin Wetmore
 Jean H. and Kenneth A. Wheeler
 Trudy Wheeler and Charles Barrett
 Margaret and Billy Whelan Jr.
 LeeAnn Whites
 Nancy and Jack Willenbrink
 John Williams
 Peter Williams
 Beth and Brad Williamson
 Marie Wilson
 Ward Wilson
 Christopher Wilson
 William Windchy
 Sue and Claude Wise
 Bonny Wise
 Janice and Charles Wiseman
 Ruthanne Wolfe and John Gonder
 Andrew Wolfson
 Sharon Wolter
 Elizabeth and Edmund Wong
 Susan and David Wood Jr.
 Keitt and Frank S. Wood
 Margaret and Jack Wood
 Matt Woods
 Virginia D. Woodward
 Stefanie Woolverton
 Judith Wulff
 Eileen Yanoviak Ph.D.
 Wendy Yoder
 Russell Zaino
 Mike Zanone
 Guthrie L. Zaring
 Rochelle Zegart
 Tinker Zimmerman
 Diane Zimmerman

140th Anniversary Recap

Thank you to those members and community supporters who celebrated the Filson's commemoration of the establishment of Kentucky State Parks at our exhibit opening in March, who danced to AppaLatin and the Louisville Leopards at our springtime celebration on the Dace Brown Stubbs Plaza in May, who bought a copy of Dan Gifford's insightful *Benefactors of Posterity* at the launch event in October, and who tasted our special bottling of Woodford Reserve selected with Elizabeth McCall and Chris Morris. The Filson140 logo might have rotated off of our website and letterhead, but the impact of commemorating our 140th anniversary in 2024 will endure.

The Filson saw a number of other important 2024 milestones that were not directly tied to our 140th year. Dr. Jacqueline Hudson arrived to be our inaugural African American History Initiative program manager. We welcomed the Southern Jewish Historical Society conference to Kentucky for the first time in its 48-year

history. We had a record-breaking year for our 30th annual house tour, and set new marks for membership and annual fund—thanks to a 140th anniversary donor challenge led by our board development committee.

The Filson's longevity is not an accident, nor is it an impediment. The Filson's 140th anniversary demonstrated to our community that we are a vital resource not only for understanding the past but for shaping the future. As we lead the city, state, and region into a series of shared milestone dates, most notable the 250th anniversary of the Declaration of Independence in 2026, the Filson remains committed to progress towards the ever more perfect realization of the founding ideals of the United States. In an era of widespread misinformation, distrust, and dwindling public resources, the Filson has never had a more important call to live its mission.

Filsonian listing reflects membership gifts received October 23, 2024–January 31, 2025.

The Filsonians

Oct 2024–Jan 2025

FILSON Membership |

\$5,000+

Rochelle Benovitz
Alan and Shelly Ann Kamei
Susan and Allan D. Lavin
Ann and Darrell Wells

CLARK Membership |

\$2,500–\$4,999

Missy and James Allen
Edith S. Bingham
Elizabeth F. and Richard H.C.
Clay
Ann Price and John J. Davis III
Heather and Marshall Farrer
Mr. and Mrs. Bernie Fineman
Lisa Green and Vincent J. Akers
Abby and R. Fairleigh Lussky
Sally D. and Stanley K.
Macdonald
Nancy and Darrell E. Shelton

SHELBY Membership |

\$1,000–\$2,499

Jill and Christopher Burckle
Nancy D. Bush
Mary Lee Fischer
Paula and Frank Harshaw
Gray Henry and Neville
Blakemore Jr.
Anne and Alfred S. Joseph III
Sarah and J. Paul Keith
William Gast Lussky Jr.
Chris Morris
Peggy P. and Charles E. Patterson
Alice and Walker Stites III
Anita Matton Streeter

SUSTAINER Membership |

\$500–\$999

Gregory L. Barton
Jody and Tom Block
Ruth H. Cloudman
Ann Cobb
John G. Eifler
Gregory E. Fischer and Alexandra
Gerassimides
Monali Haldankar DMD and
Brandon McReynolds Ph.D.
Linda R. and John L. Kiesel
Jessica S. Loving and
Sheryl G. Snyder
Allison Maggiolo
Ailsie B. McEnteggart
Mary T. Means

Debra and Ronald J. Murphy
Ellen Stepleton
Brenda and W. Waverley Townes
Judith Schultze and Samuel
Gwathmey Tyler III
Joan T. Whittenberg
Zaurie Zimmerman

FRIEND Membership |

\$250–\$499

Elizabeth Bottorff and
Mark A. Ahlemann
Carolyn and John W. Arnett
Wayne Basconi
Hilary Beall and Joe Tesoriero
Eddi A. and Gordon S. Brown
Rose Cooper and Allen Bush
Al and Patti Cross
Carol and Dale Edward Crossman
Steve Dobler
Frank P. Doheny Jr.
Dennis Dolan
Dan and Carla Ferguson
Michael M. Fleishman
Laurel Fuson and
William G. Lancaster
Annette Grisanti and
Michael Kemper
Maria G. and John W. Hampton
Mary and James Harty
Carol W. Hebel
William Herndon
Constance P. and Willis W. Hobson
Patrice and Thomas Huckaby
Mary Julia and Forrest S. Kuhn
Romeo Laureano
Maud Welch and John MacLean
Aline Meeker and
Michael Widerschein
Glynn L. Morgen
Sally L. and R. Charles Moyer
Susan H. Norris
Tombo Owen
Penny H. Pearson
William Pollard
Phyllis and Michael Shaikun
Helen Cohen and Larry T. Sloan
Glenn W. Smallwood Jr.
Barbara K. West and
Vertner D. Smith III
Sherry L. and Allen F. Steinbock
Madonna and Todd Stengel
Nancy L. Swift
Anne and C. William Swinford Jr.
Deborah and Harrell N. Tague

Janis and Taft Thompson Jr.
Anna and Allan Weiss
Aly Weixler

FAMILY Membership |

\$125–\$249

Carlyn Altman
Mark Anderson
Barbara and Frederick Arensman
David Barhorst
Jane K. and Curtis L. Barrett
Kay and John Begley
Howard J. Berman
Shane Blackmer
William D. Bobrow
Anne W. Bowman
Susan M. and William W. Brewer Jr.
Joyce Bridge
Elmedina Brkic
Janie and Dick Burks
Richard M. Campbell
Sherry and David Carlson
Kathryn Carnighan
Bradley A. Case
Karen A. and Paul A. Casi II
George C. Castleman
Mary Beth and Charles T. Clark
Linda H. and George Collins
Diane Cornwell
Jean and Hal Corwin
Lee Cory
Louise and William S. Creason Sr.
Carole List Crites
William and Constance Crosby
Sarah Glass and Christian J. Dauer
Charles Davis
William W. Davis
Peggy C. and Harold E. Dawson
Larry C. Deener
April and Terrell Dickey
Virginia S. and Martin P. Duffy
Donna M. and Scott D. Duncan
Michael E. Dunn
Diana Durham and Paul Paletti Jr.
John D. Eckerle
Bill Eckrich
Patricia A. and Edward D. Ehrhart
James A. Ellis
Jane and Bert Emke
Gail and Pat Evans
R. Bruce Farrer
Susan B. Foley
Mary Noreen and Sean P. Fore
Maile J. and Douglas G. Fowler
Irene M. and Robert M. Fox

Aedin Frei
Jesse Gant
Louise Farnsley Gardner and
Michael Gardner
Eleanor Gill
Susan and Mark Glazer
Melanie and Brad Goan
Luke Goetzinger
Steven S. Goldstein and
Sheila Lynch
Lagara A. and Dennis Goulait
Margaret and David Graves
Shirley A. and Roger C. Green Jr.
Jonathan Grief
Rachel B. Grimes
Margaret M. Gripshover and
Thomas L. Bell
Sharon W. and J. Richard Gruber
Sharon Hager
An and Madison Hamman
Judy and Tom Hardwick
Shirley and Paul Harmon
Ellen Green and Timothy Hawley
Wesley Hiestand
Karen and Edgar Hill
Meg and Jaci Hinchey
Tommy Hines
Clarence Hervey Hixson
John Hollis
Charlene and Chester Holloway
Mary Ann and Gerald G. Hubbs
Joan and Richard Humke
Kelly and Gary Hyberger
Michael D. Jamerson
Aaron Jent
Diana and Steven Jester
Diane Moore and John Johnson
Bonnie Omer and
W. Stephen Johnson
Frederick A. Johnston
Deedee and Thomas Jordan
Barbara and William Juckett
Paula Keith
Jane Eblen and George C. Keller
Susan and Bradley Keller
Lori S. and John W. Key
Maureen and Gary Kingry
Kathryn and Jeffrey Kirk
James T. Kirkwood
Diane and David Kissel
Deborah and Steven Klapheke
John Stewart Koch
Michael Lannon
Nicolas Laracuenta
Kate Shapira Latts and Allan Latts

Philip R. Lawver	Thomas Nugent III	Becky D. Rotan	Liz and Doug Thrasher
Annie and Greg Likins	David L. Olson	Claudia Runge	Patricia and Joseph Tobin
Patti Linn	Judith and Walter Olson	Claudia E. and William J. Sandman III	David S. Traub Jr.
Therese and David Marshall	Miriam Ostroff	Carol and Milan Savkovich	Anna Laura and Thomas R. Trimbur
Robert Marshall	Christopher G. Padgett	Kenneth Schwalbert	Sandra F. Tuley and Neil S. Weiner
Gloria C. and Charles E. Martin	Davalyn Palmer	Benton Seay	John W. Russ and Cheryl Ungerleider
Jerry W. Martin M.D.	Kathleen Pardee	John E. Selent	John Van Willigen
Eva and Walter Mastropaolo	Julie and Warren Payne	Ann M. Sheadel	Jose Vazquez
Susan and Bob Means	Rebecca and Brad Phillips	Walter B. Shively	Inta K. Voight
Sara E. and Roy N. Merritt	Alan Pirtle	James Sickel	Jerome and Annette Walker
Margaret T. and Donald G. Meyer Sr.	Dee and Bill Pregliasco	Arlene and Judah Skolnick	Theodore Wathen
Sheilah and Stanley R. Miles	Mark M. Prussian	Scott Slucher	Mandy and J. Tanner Watkins
Susan P. and John H. Miller	Bruce and Mitzi Quick	Jane and William Smith	John Webb
Elizabeth and Guy Montgomery	Susan M. Rademacher	Anita and Todd Solomon	R. Kent Westberry
Gregory H. Moore	Andrew C. Rapp	David S. Stierle	Kathi Whalen and Peter Piccirilli
Tom Morton	Sandy Renner	John Stone	Jean H. and Kenneth A. Wheeler
Tyra H. and Dick Mueller	Suzanne B. and John F. Rice	Rosalind Streeter and Willard Crawford	Trudy Wheeler and Charles Barrett
Aviv Na'amani	Michael Richard	John Sutton	Albin C. Whitworth
Martha Neal	Raleigh Ridge and Frank Hemko	Linda R. and Gary M. Tanner	Bill and Ralph Wilson
Sharon P. and Robert B. Nesmith	Claudia and George W. Robertson	Nancy C. and Charles E. Teeple	Kenneth Wooton
Cheri Casey and Aldis Norgello	Cooper Robertson	Tyler Thomas	
Ellen F. Mershon and W. Allen Northcutt III	Anne B. and Martin Rockwell	Judy and Bryan Thomas	
	Jane and Donald Rosenbarger		
	Susan Rostov		



The Thruston Legacy Circle is an honorary society established in 2015 to recognize those who have followed the example of R.C. Ballard Thruston by including the Filson in their estate plans.

If you have made a legacy gift to the Filson and have not so advised us, we thank you and ask that you let us know so we can welcome you to the circle. If you would like

more information on the Thruston Legacy Circle, please contact our Development Director, Brenna Cundiff, at 502.634.7108 or by email at brenna@filsonhistorical.org.

We want to thank the Thruston Legacy Circle members listed below for investing in the future of our organization by making a legacy gift to the Filson Historical Society.

TLC Members

Allan S. Atherton
Judith Bloor and David Brandt
*Collen Dale Bratcher**
*Joan Brennan**
Elizabeth and Richard Clay
R. Helm and Leslie M. Dobbins
Mr. Samuel F. Dorr and*
Mr. Charles S. Raith
Leonard Gross and Emily Durrett*
Daniel Gifford, Ph.D. and
Stephen Shaffer
Linda and Stuart S. Goldberg ✨
Jane Goldstein ✨
Michael N. Harreld
Henry V. Heuser, Jr.
*Frances Starks Heyburn**

James J. Holmberg
Julie Scoskie James
Alan and Shelly Ann Kamei
Judy and Jim Kenney
*Martha Kissler**
Robert Kulp
Susan and Allan Lavin
Lois S. Louis and David B. Ratterman
Kenneth Haller McCrocklin, MD &
Callirrhoe Nakos McCrocklin Family
Rabbi Stanley Miles and Sheilah
Abramson-Miles ✨
Alton E. Neurath, Jr. and Elizabeth W.
*Neurath**
Tara O'Toole-Conn
Stewart Ogden

Pierce Family
Mary S. Sachs
Sharon and John Stern*
Bill and Lindy Street*
Dace Brown Stubbs
Clay and Jo Stuckey
Carl M. Thomas
*Rose Mary Toebbe**
James R. Voyles
Pamela Sullivan Washburn and
Dennis Washburn
George R. Bailey and Porter Watkins
Morris Weiss, M.D.
Orme Wilson
Beth and Ron Wiseman
Stephen R. Zollner

*Deceased ✨ Life & Legacy program donor supporting the Jewish Community Archive at the Filson.

The Filson Historical Society thanks our Corporate Supporters:

